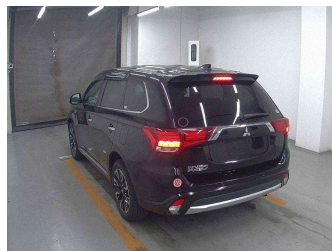
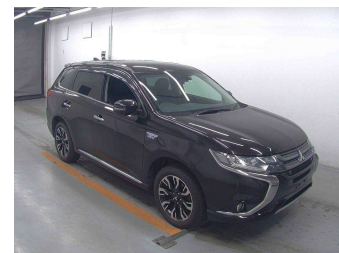


# 2015 Mitsubishi Outlander 2.0 G 4WD PHEV Navi



Purchase Price

**\$19,930**

Includes GST  
Excludes on-road costs of \$350

Finance may be available on this vehicle. Ask one of our friendly staff for more information.

Gain peace of mind with Mechanical Breakdown Insurance. **Ask us how.**

## Top features

- » 4WD
- » ABS Braking
- » Air Conditioning
- » Alloy Wheels (Factory)
- » Body Kit (Factory)
- » CD Player
- » Central Locking
- » Chain Driven (no cam b...
- » Comes with new WOF
- » Cruise Control
- » Electric Mirrors
- » Electric Windows
- » Facelift Model
- » Remote Locking
- » Reversing Camera
- » Smart Key

Body Style

**5 door, SUV / 4x4**

Odometer

**143,900 km**

Engine

**2000 cc, Plug-In Hybrid**

Fuel Type

**Plug-in Hybrid**

Transmission

**Auto, 4WD/4x4**

Wheels

-

VIN

**7AT0CJ3MX24306223**

Interior

**Black, Half-Leather**

Safety

-

Reg No.

-

Ext Colour

**Black**

History

**Ex-Overseas**

Seats

**5 seats**

CO2 Emissions

-

Energy Economy

-

**Stock ID: 23575**



olGo Motors Rolleston | Phone 0800 888 155 | Email  
rol.sales@olgomotors.co.nz  
861 Jones Rd, Rolleston 7614, New Zealand  
www.olgomotors.co.nz



★★★★★  
4.54 | 1542 reviews