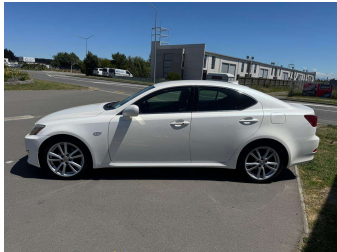
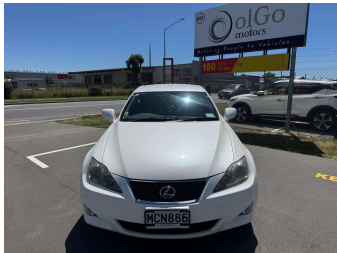
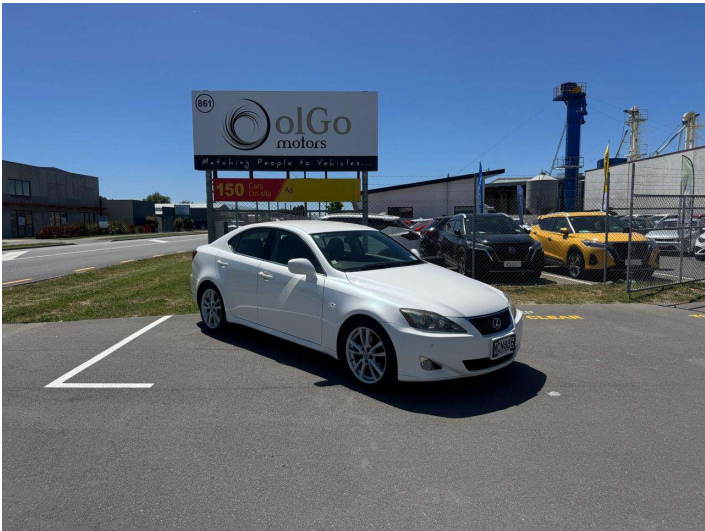


# 2006 Lexus IS 250 Ver. S



## Purchase Price

**\$11,730**

Includes GST  
Excludes on-road costs of \$150

Finance may be available on this vehicle. Ask one of our friendly staff for more information.

Gain peace of mind with Mechanical Breakdown Insurance. **Ask us how.**

## Top features

- » ABS Braking
- » Air Conditioning
- » Alloy Wheels (Factory)
- » Body Kit (Factory)
- » CD Player
- » Central Locking
- » Chain Driven (no cam b...)
- » Comes with new WOF
- » Cruise Control
- » Electric Windows
- » ESC
- » Power Front Seat(s)
- » Radio
- » Rear Wheel Drive
- » Remote Locking
- » Reversing Camera
- » Smart Key

## Body Style

**4 door, Sedan**

## Odometer

**122,600 km**

## Engine

**2500 cc, Internal Combustion**

## Fuel Type

**Petrol**

## Transmission

**6-Speed Auto, Rear Wheel**

## Wheels

-

## VIN

**7AT0B00EX19016751**

## Interior

**Black, Cloth**

## Safety



Based on 2024 UCSR rating  
for 05-13 models

## Reg No.

**MCN886**

## Ext Colour

**White**

## History

**Ex-Overseas, 1 owner**

## Seats

**5 seats**

## CO2 Emissions

**★★★★☆☆**

**231 grams/km**

## Energy Economy

**★★★★☆☆**

**Annual fuel cost of \$3,760  
9.6L per 100km**

Cost per year is an estimate based on petrol price of \$2.80 per litre and an average distance of 14000 km. Emissions and Energy Economy figures standardised to 3P WLTP.

**Stock ID: 25753**



olGo Motors | Phone 03 281 8581 | Email sales@olgo.co.nz  
861-874 Jones Road, Rolleston 7614, New Zealand  
www.olgomotors.co.nz



★★★★★  
4.52 | 4320 reviews