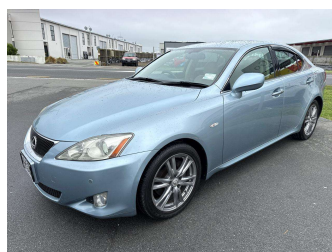


2008 Lexus IS 250 Ver. I



Purchase Price

\$12,930

Includes GST
Excludes on-road costs of \$150

Finance may be available on this vehicle. Ask one of our friendly staff for more information.

Gain peace of mind with Mechanical Breakdown Insurance. **Ask us how.**

Top features

- » ABS Braking
- » Air Conditioning
- » Alloy Wheels (Factory)
- » Body Kit (Factory)
- » CD Player
- » Central Locking
- » Chain Driven (no cam b...)
- » Comes with new WOF
- » Cruise Control
- » Electric Windows
- » Heated Seat(s)
- » Power Front Seat(s)
- » Radio
- » Rear Wheel Drive
- » Remote Locking
- » Reversing Camera
- » Smart Key
- » Tow Bar

Body Style

4 door, Sedan

Odometer

98,700 km

Engine

2500 cc, Internal Combustion

Fuel Type

Petrol

Transmission

6-Speed Auto, Rear Wheel

Wheels

-

VIN

7AT0B00EX21082015

Interior

Beige, Half Leather

Safety



Based on 2025 UCSR rating for 05-13 models

Reg No.

NWE664

Ext Colour

Light Blue

History

Ex-Overseas, 1 owner

Seats

5 seats

CO2 Emissions

★ ★ ★ ☆ ☆ ☆

231 grams/km

Energy Economy

★ ☆ ☆ ☆ ☆ ☆

**Annual fuel cost of \$3,760
9.6L per 100km**

Cost per year is an estimate based on petrol price of \$2.80 per litre and an average distance of 14000 km. Emissions and Energy Economy figures standardised to 3P WLTP.

Stock ID: 25976



OlGo Motors | Phone 03 281 8581 | Email sales@olgo.co.nz
861-874 Jones Road, Rolleston 7614, New Zealand
www.olgomotors.co.nz

