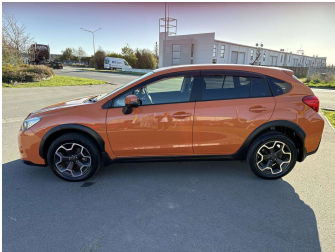
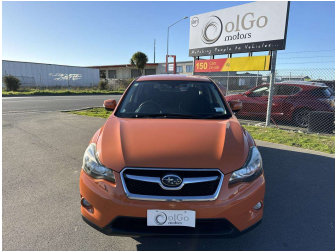


# 2013 Subaru XV 2.0i-L 4WD Eyesight



### Purchase Price

**\$13,930**

Includes GST  
Excludes on-road costs of \$475

Finance may be available on this vehicle. Ask one of our friendly staff for more information.

Gain peace of mind with Mechanical Breakdown Insurance. **Ask us how.**

### Top features

- » 4WD
- » ABS Braking
- » Air Conditioning
- » Alloy Wheels (Factory)
- » Body Kit (Factory)
- » CD Player
- » Central Locking
- » Chain Driven (no cam b...)
- » Comes with new WOF
- » Cruise Control
- » Electric Mirrors
- » Electric Windows
- » Power Front Seat(s)
- » Remote Locking
- » Reversing Camera
- » Smart Key

### Body Style

**5 door, SUV / 4x4**

### Odometer

**67,600 km**

### Engine

**2000 cc, Petrol**

### Fuel Type

**Petrol**

### Transmission

**Auto, 4WD/4x4**

### Wheels

-

### VIN

**7AT0GF1XX24028889**

### Interior

**Black, Cloth**

### Safety



Based on 2023 UCSR rating for 12-16 models

### Reg No.

-

### Ext Colour

**Orange**

### History

**Ex-Overseas**

### Seats

**5 seats**

### CO2 Emissions

★★★★☆

**163 grams/km**

### Energy Economy

★★★☆☆

**Annual fuel cost of \$2,740  
7L per 100km**

Cost per year is an estimate based on petrol price of \$2.80 per litre and an average distance of 14000 km. Emissions and Energy Economy figures standardised to 3P WLTP.

**Stock ID: 24256**



olGo Motors Rolleston | Phone 0800 888 155 | Email  
rol.sales@olgomotors.co.nz  
861 Jones Rd, Rolleston 7614, New Zealand  
www.olgomotors.co.nz

