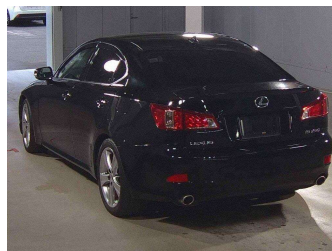


# 2012 Lexus IS 250 Ver. T



Purchase Price

**\$13,430**

Includes GST  
Excludes on-road costs of \$475

Finance may be available on this vehicle. Ask one of our friendly staff for more information.

Gain peace of mind with Mechanical Breakdown Insurance. **Ask us how.**

## Top features

- » ABS Braking
- » Air Conditioning
- » Alloy Wheels (Factory)
- » Body Kit (Factory)
- » Central Locking
- » Chain Driven (no cam b...
- » Comes with new WOF
- » Cruise Control
- » Electric Windows
- » ESC
- » Radio
- » Rear Wheel Drive
- » Remote Locking
- » Reversing Camera
- » Smart Key

Body Style

**4 door, Sedan**

Odometer

**149,500 km**

Engine

**2500 cc, Internal Combustion**

Fuel Type

**Petrol**

Transmission

**6-Speed Auto, Rear Wheel**

Wheels

-

VIN

-

Interior

**Black, Cloth**

Safety

-

Reg No.

-

Ext Colour

**Black**

History

**Ex-Overseas**

Seats

**5 seats**

CO2 Emissions

-

Energy Economy

-

**Stock ID: 26345**



olGo Motors | Phone 03 281 8581 | Email sales@olgo.co.nz  
861-874 Jones Road, Rolleston 7614, New Zealand  
www.olgomotors.co.nz

