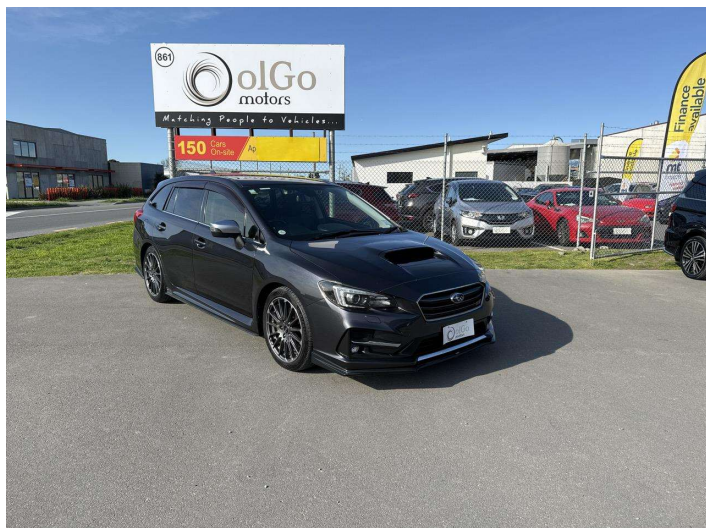


2017 Subaru Levorg 2.0 STi 4WD EyeSight



Purchase Price **\$20,930**

Includes GST
Excludes on-road costs of \$475

Finance may be available on this vehicle. Ask one of our friendly staff for more information.

Gain peace of mind with Mechanical Breakdown Insurance. **Ask us how.**

- Top features**
- » 4WD
 - » ABS Braking
 - » Air Conditioning
 - » Alloy Wheels (Factory)
 - » Body Kit (Factory)
 - » CD Player
 - » Central Locking
 - » Chain Driven (no cam b...)
 - » Comes with new WOF
 - » Cruise Control
 - » Electric Mirrors
 - » Electric Windows
 - » Facelift Model
 - » Heated Seat(s)
 - » Power Front Seat(s)
 - » Remote Locking
 - » Reversing Camera
 - » Smart Key

Body Style
5 door, Station Wagon

Odometer
155,600 km

Engine
2000 cc, Petrol

Fuel Type
Petrol


Transmission
Auto, 4WD/4x4

Wheels
-

VIN
7AT0GF22X24027939

Interior
Red, Leather

Safety



Based on 2023 VSRR rating

Reg No.
-

Ext Colour
Grey

History
Ex-Overseas

Seats
5 seats

CO2 Emissions
★ ★ ★ ★ ☆ ☆ ☆
195 grams/km

Energy Economy
★ ★ ☆ ☆ ☆ ☆ ☆
Annual fuel cost of \$3,290
8.4L per 100km

Cost per year is an estimate based on petrol price of \$2.80 per litre and an average distance of 14000 km. Emissions and Energy Economy figures standardised to 3P WLTP.

Stock ID: 24427



O!Go Motors Rolleston | Phone 0800 888 155 | Email
rol.sales@olgomotors.co.nz
861 Jones Rd, Rolleston 7614, New Zealand
www.olgomotors.co.nz

