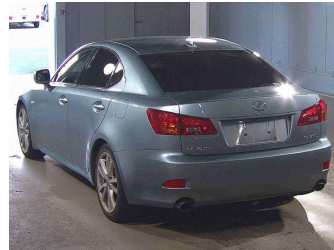


2006 Lexus IS 250 Ver. S



Purchase Price **\$14,430**

Includes GST
Excludes on-road costs of \$475

Finance may be available on this vehicle. Ask one of our friendly staff for more information.

Gain peace of mind with Mechanical Breakdown Insurance. **Ask us how.**

- Top features**
- » ABS Braking
 - » Air Conditioning
 - » Alloy Wheels (Factory)
 - » Body Kit (Factory)
 - » CD Player
 - » Central Locking
 - » Chain Driven (no cam b...
 - » Comes with new WOF
 - » Cruise Control
 - » Electric Windows
 - » Radio
 - » Rear Wheel Drive
 - » Remote Locking

Body Style
4 door, Sedan

Odometer
73,200 km

Engine
2500 cc, Internal Combustion

Fuel Type
Petrol

Transmission
6-Speed Auto, Rear Wheel

Wheels
-

VIN
-

Interior
Black & Grey, Cloth

Safety
-

Reg No.
-

Ext Colour
Light Blue

History
Ex-Overseas

Seats
5 seats

CO2 Emissions
-

Energy Economy
-

Stock ID: 26310



olGo Motors | Phone 03 281 8581 | Email sales@olgo.co.nz
861-874 Jones Road, Rolleston 7614, New Zealand
www.olgomotors.co.nz

★★★★☆
4.53 | 4456 reviews