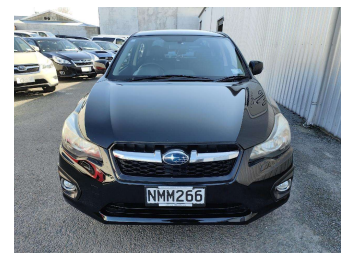
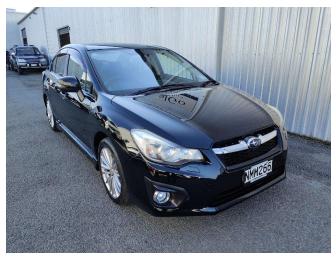
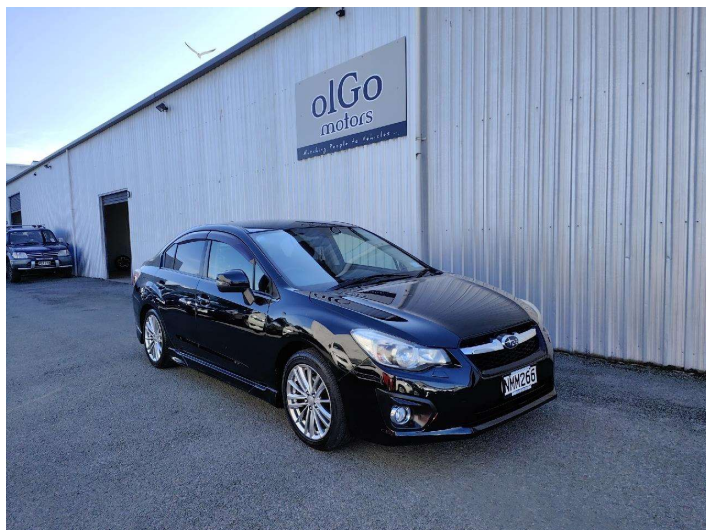


2013 Subaru Impreza G4 2.0i-S 4WD



Purchase Price

\$8,830

Includes GST
Excludes on-road costs of \$150

Finance may be available on this vehicle. Ask one of our friendly staff for more information.

Gain peace of mind with Mechanical Breakdown Insurance. **Ask us how.**

Top features

- » 4WD
- » ABS Braking
- » Air Conditioning
- » Alloy Wheels (Factory)
- » Body Kit (Factory)
- » CD Player
- » Central Locking
- » Chain Driven (no cam b...)
- » Comes with new WOF
- » Cruise Control
- » Electric Windows
- » New Shape
- » Remote Locking
- » Smart Key
- » Tow Bar

Body Style

4 door, Sedan

Odometer

152,500 km

Engine

2000 cc, Petrol

Fuel Type

Petrol

Transmission

Auto, 4WD/4x4

Wheels

-

VIN

7AT0GF09X21010718

Interior

Black, Half Leather

Safety



Based on 2023 UCSR rating for 12-16 models

Reg No.

NMM266

Ext Colour

Black

History

Ex-Overseas, 1 owner

Seats

5 seats

CO2 Emissions

★★★★☆

163 grams/km

Energy Economy

★★★☆☆

**Annual fuel cost of \$2,740
7L per 100km**

Cost per year is an estimate based on petrol price of \$2.80 per litre and an average distance of 14000 km. Emissions and Energy Economy figures standardised to 3P WLTP.

Stock ID: 24475



olGo Motors Sydenham | Phone 0800 888 585 | Email chc.sales@olgomotors.co.nz
115 Orbell St, Sydenham, Christchurch 8023, New Zealand
www.olgomotors.co.nz



★★★★★
4.50 | 2221 reviews