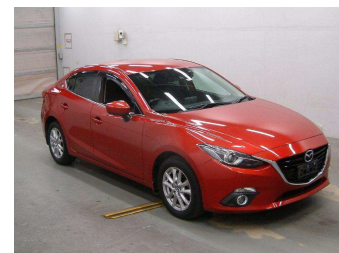


2015 Mazda Axela Hybrid S 2.0 L Pkg



Purchase Price **\$11,625**

Includes GST
Excludes on-road costs of \$475

Finance may be available on this vehicle. Ask one of our friendly staff for more information.

Gain peace of mind with Mechanical Breakdown Insurance. **Ask us how.**

- Top features**
- » ABS Braking
 - » Air Conditioning
 - » CD Player
 - » Central Locking
 - » Chain Driven (no cam b...
 - » Comes with new WOF
 - » Cruise Control
 - » Electric Mirrors
 - » Electric Windows
 - » Front Wheel Drive
 - » Heated Seat(s)
 - » Remote Locking
 - » Reversing Camera
 - » Smart Key

Body Style
4 door, Sedan

Odometer
148,000 km

Engine
2000 cc, Hybrid

Fuel Type
Hybrid

Transmission
Auto, Front Wheel

Wheels
-

VIN
-

Interior
Black, Leather

Safety
-

Reg No.

-

Ext Colour
Wine Red

History
Ex-Overseas

Seats
5 seats

CO2 Emissions

-

Energy Economy

-

Stock ID: 23881



olGo Motors Sydenham | Phone 0800 888 585 | Email chc.sales@olgomotors.co.nz
115 Orbell St, Sydenham, Christchurch 8023, New Zealand
www.olgomotors.co.nz

